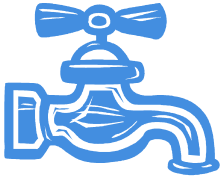



# Paving

## The Old Green

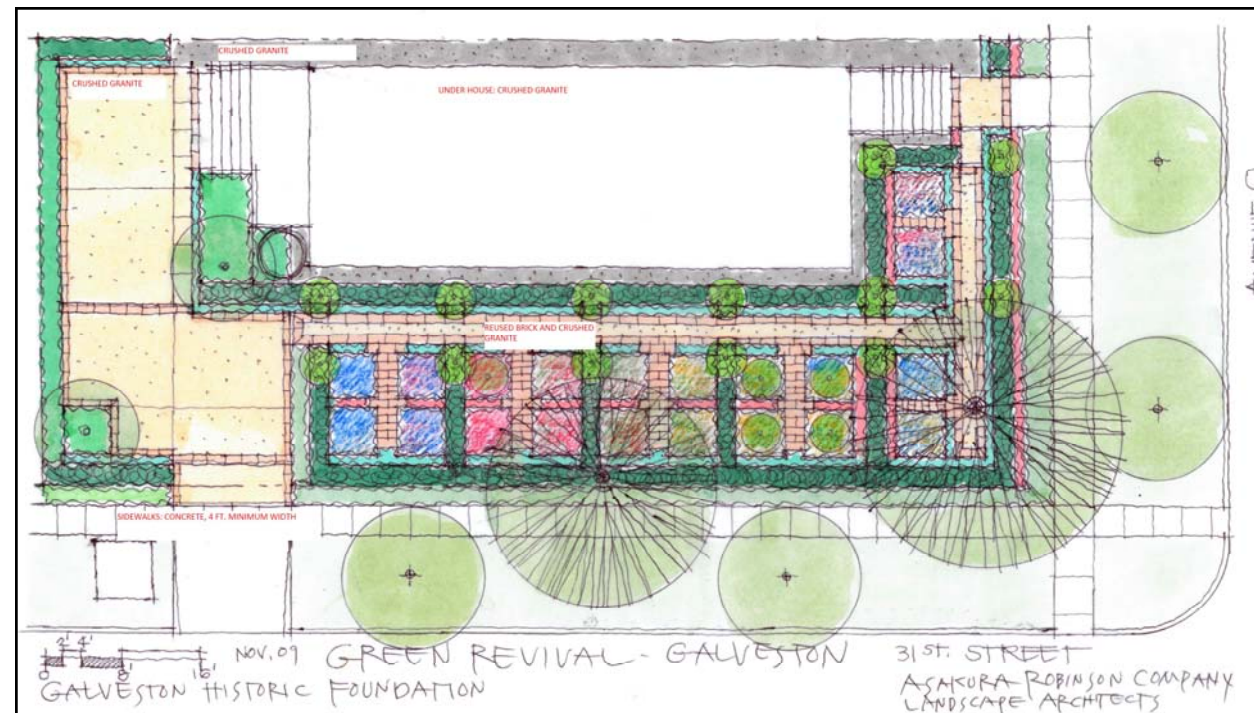
## The New Green

GREEN KEY	
	
	

- Early Galvestonians used **crushed granite, gravel, and oyster shells** as early paving materials. All of these are recycled by-products.
- Other early pavers used for walk ways and driveways were **stone and concrete**.

- New paving systems available create a semi-solid surface that still **allows water to flow through**.
- **Pervious pavers** reduce runoff by allowing water to drain through and stay on site.

- Other pervious paving systems include gravel, porous asphalt, bark mulch, and plastic grid systems that **reinforce the looser top surface**.



Landscape Design for 3101 Avenue Q, by Keiji Asakura